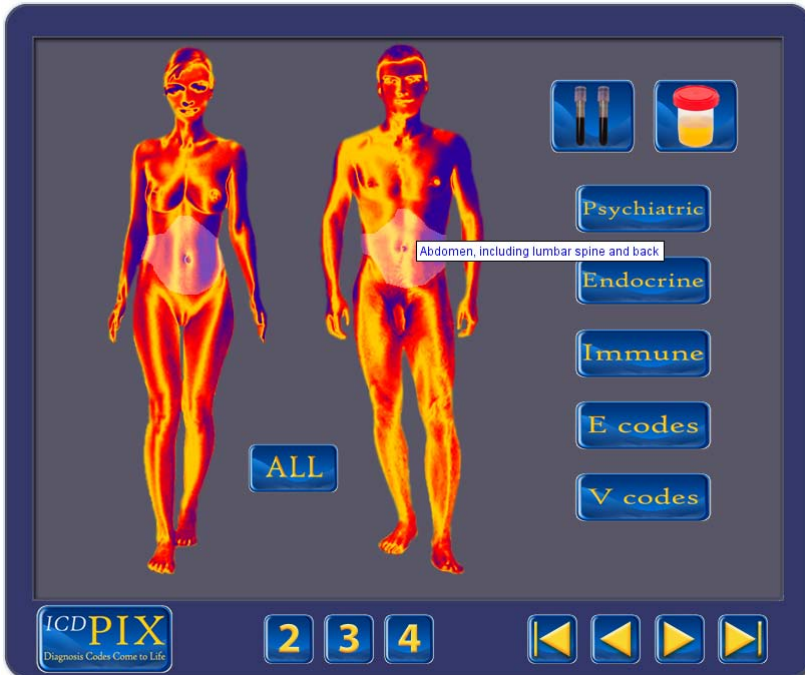


Getting Started



icdPIX makes it easy to find a filtered list of diagnosis codes appropriate to a body part, organ or tissue, and condition cause or characterization in 3 clicks or less.

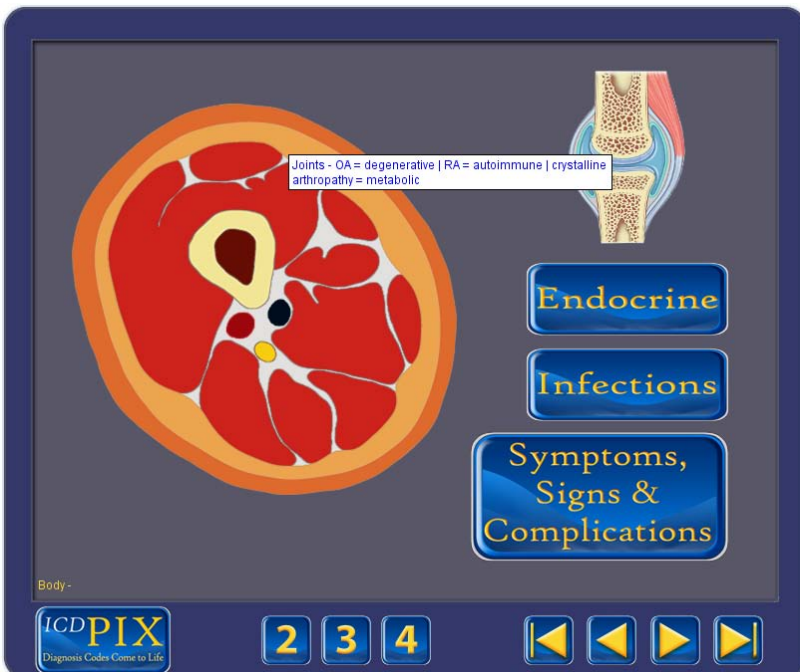
To get started, roll the cursor over the two anatomical images and the other buttons – in each instance a popup tooltip will clarify which body parts or groups of codes they are mapped to. A click on any selectable body part or button will open the next screen and allow a drill down by anatomical part, or code subset.

The **2/3/4** buttons are designed to allow selection of multiple body parts before moving to the next screen.

There is a series of navigation buttons at the

bottom right which allow a jump forward, or all the way to the codes without making any selections.

Moving forward



On each subsequent screen, you will again see tooltips to help you in the selection process.

Note that these tooltips often will contain information to guide the selections to be made on the third screen in order to reach particular diagnoses.

As you progress through the screens, the legend in the bottom left corner confirms the selections made.

In the example here, the button 'ALL' was selected on the home screen.

The 'Etiology' or condition type screen.

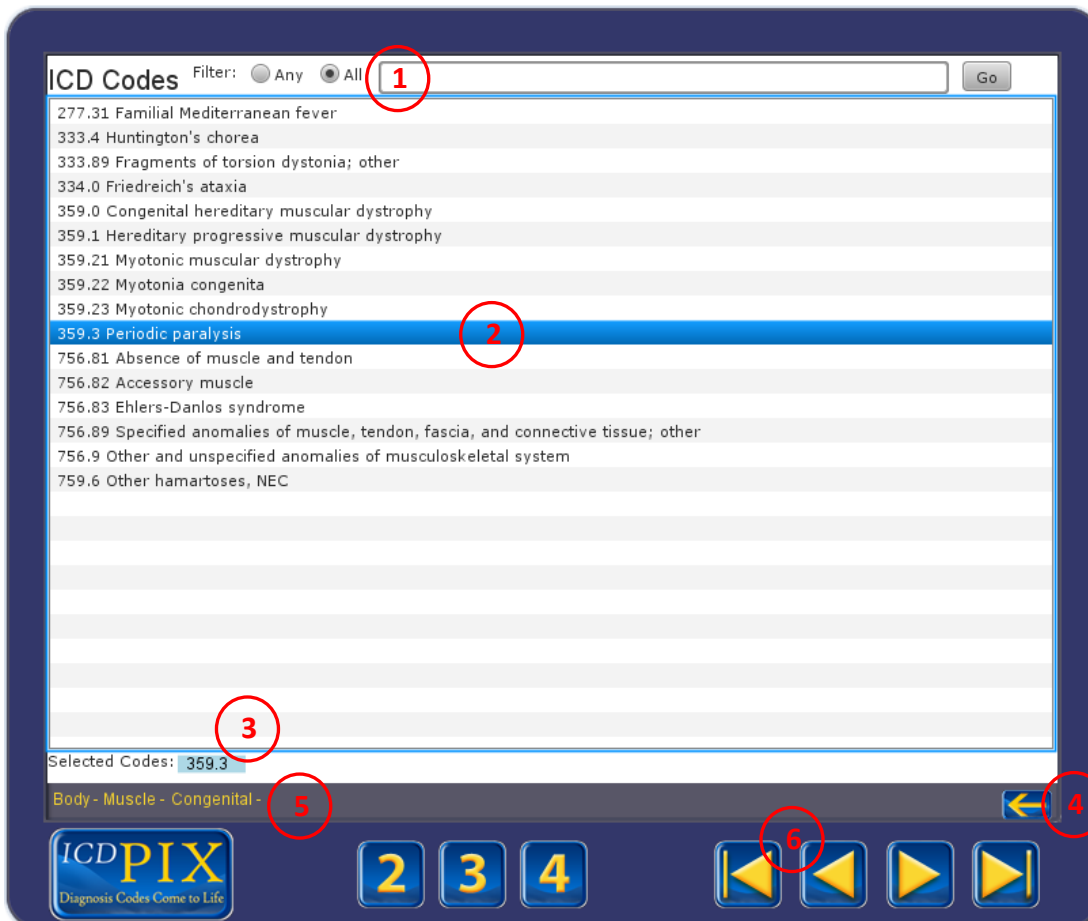


This third 'Etiology' screen is where you select the button which corresponds to the cause or nature of the condition.

Once again, tooltips will be present to help guide you, and note the legend in the bottom left confirming the selections made on the previous screens – in this case Body, Muscle.

Depending on the selections made previously, buttons here will not be visible if they are not applicable to the parts selected on preceding screens.

The Results screen



After selecting an etiology or category, you will get to a list of codes displayed on the results screen, where you have several options to refine the search, and to select codes which will automatically copy to your computer clipboard for pasting elsewhere.

Refer to the details on the next page for the details associated with the red numbered items in this image.

Results screen functionality

- 1) The results can be filtered using our smart text filter – enter a code, or any partial word of 3 letters or more. The filter will also allow search using multiple words or partial words – the ‘Any ‘ and All options work as follows:
 - a. Any – results will match any of the search terms entered – a wider search
 - b. All – the results will match all the words entered – a focused search. (If any codes are entered, those will still appear in addition to diagnosis codes matching the word search)
- 2) Clicking any of the codes in the results window will copy them to the list below (3), and also automatically copy them to the clipboard for pasting elsewhere – no need to do any of your own copying.
- 3) If you have selected any codes in error, simply click them in this region to remove them – this will also modify what is copied to your computer clipboard.

If you find that the codes you want do not appear in the results view, you have two options: to either throw the net wider – detailed in 4, or to go back to the etiology/category screen and reselect – detailed in 6.

- 4) This backspace button will remove the filtering as displayed in the legend in the lower left (5) and so expand the search. In this example it would show **all** codes matching the selection of Body – Muscle, or Body if clicked twice. This can be used in conjunction with the smart text filter.
- 5) Is the legend which displays the items selected on prior screens, which can be cleared one step at a time with the backspace button (4)
- 6) Using the backspace button in the navigation area will move you back to the etiology/category screen where a different selection can be made.